

# Model 2014 & 2015

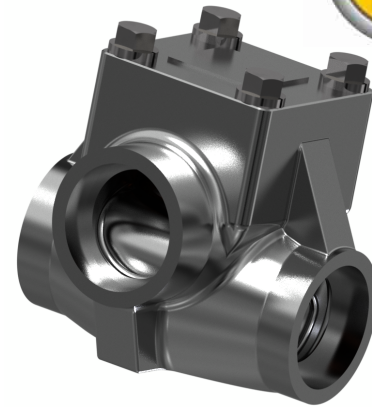
1½" to 2"

DN40 to DN50

**FPE**

**Fluid  
Power  
Energy**

## Three-Way Thermostatic Valves



### Compact and Reliable Temperature Control

Fluid Power Energy (FPE) thermostatic valves utilize the principle of expanding wax, which in the semi-liquid state undergoes large expansion rates within a relatively narrow temperature range. The self-contained element activates a stainless steel sleeve, which directs flow. All FPE thermostatic valves are factory set at predetermined temperatures: no further adjustments are necessary.

When used in a diverting application, on start-up the total fluid flow is routed back to the main system. As fluid temperature rises to the control range, some fluid is diverted to the cooling system. As fluid temperature continues to increase, more flow is diverted. When the thermostat is in a fully stroked condition, all fluid flow is directed to the cooling system.

FPE thermostatic valves may also be used in a mixing application. Hot fluid enters the "B" port and colder fluid enters the "C" port. The flows mix and the thermostat adjusts flow through ports "B" and "C" to reach the desired temperature, exiting the "A" port.

Standard FPE thermostatic valve housings are made from aluminum and grey iron castings, however, ductile iron, bronze, steel and stainless steel housings are available.

Additional BSP, SAE and JIS threads available.

Including:

|           |                            |
|-----------|----------------------------|
| S2014-1   | 1½" Socket Weld Connection |
| S2014     | 2" Socket Weld Connection  |
| S2015-1   | 1½" Socket Weld Connection |
| S2015     | 2" Socket Weld Connection  |
| S2014-X16 | 2" Butt Weld Connection    |
| S2015-X16 | 2" Butt Weld Connection    |

### Features and Benefits

- Wide range of temperatures
- Heavy duty
- Self-contained
- Replaceable element
- Non-adjustable
- Rugged construction
- Tamper-proof
- Operate in any orientation
- Compact

[www.FPEvalves.com](http://www.FPEvalves.com)

EUROPE, MIDDLE EAST,  
AFRICA, ASIA + PACIFIC  
+44 1733 206 678  
[emeaap@FPEvalves.com](mailto:emeaap@FPEvalves.com)

AMERICAS  
+1 262 548 6220  
[americas@FPEvalves.com](mailto:americas@FPEvalves.com)

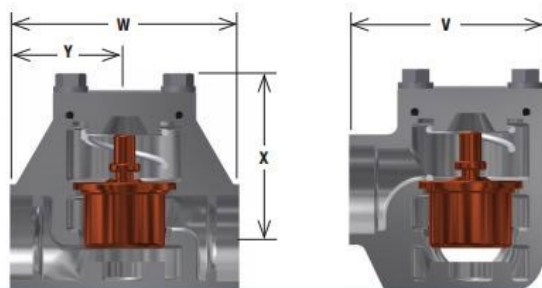
CHINA  
+86 0519 8158 0102  
[china@FPEvalves.com](mailto:china@FPEvalves.com)

# Model 2014 & 2015 Three-Way Thermostatic Valve Specifications

All units in inches (mm) or lbs (Kg); English (metric)

| Model Number           | Body Material* | Connection Size | Principal Dimensions Units |              |              |               |               | No. of elements |
|------------------------|----------------|-----------------|----------------------------|--------------|--------------|---------------|---------------|-----------------|
|                        |                |                 | X                          | Y            | W            | Z             | V             |                 |
| *2014-1<br>*2015-1     | S              | 1½" SOCKET WELD | 4 15/16 (125)              | 3 13/16 (96) | 6 7/16 (163) | 5 13/16 (147) | 5 15/16 (150) | 1               |
| *2014<br>*2015         | S              | 2" SOCKET WELD  | 4 15/16 (125)              | 3 13/16 (96) | 6 7/16 (163) | 5 13/16 (147) | 5 15/16 (150) | 1               |
| *2014-X16<br>*2015-X16 | S              | 2" BUTT WELD    | 4 15/16 (125)              | 3 13/16 (96) | 6 7/16 (163) | 5 13/16 (147) | 5 15/16 (150) | 1               |

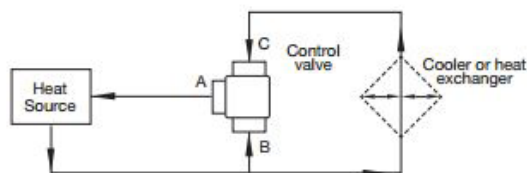
Replace \* with body material type: S = Steel



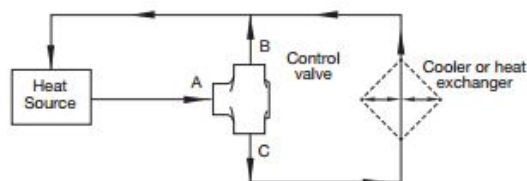
| Pressure ratings @ 250°F |      | Weight |
|--------------------------|------|--------|
| Material                 | S    | S      |
| psi                      | 500  | 20 (9) |
| Bar                      | 34.4 |        |

| Service Kits (xxx represents temperature °F) |               |        |         |            |
|--|---------------|--------|---------|------------|
| Model  | O-Ring        | Gasket | LipSeal | Thermostat |
| 2400-xxx                                     | 1 of Buna-N   | 1      | 1       | 1          |
| 2400V-xxx                                    | 1 of Viton    | 1      | 1       | 1          |
| 2400E-xxx                                    | 1 of Neoprene | 1      | 1       | 1          |

| Lip Seal Insertion Tools |                         | Lip Seal Extraction Tools |                          |
|--------------------------|-------------------------|---------------------------|--------------------------|
| Part Number              | Component               | Part Number               | Component                |
| 2071-IT                  | Lip Seal Insertion Plug | 2071-RT                   | Lip Seal Extraction Plug |



Mixing system



Diverting system

NOTE: Service Kits are supplied with Housing O-Rings & Housing Gaskets. Make sure to replace your original housing seal using the same style seal, and discard the extra component. If your valve was originally supplied with a gasket, DO NOT attempt to use an O-Ring, as the seal will leak without a groove to accept the O-Ring

Note: FPE reserves the right to substitute ordered material for better quality.

[www.FPEvalves.com](http://www.FPEvalves.com)

EUROPE, MIDDLE EAST,  
AFRICA, ASIA + PACIFIC  
+44 1733 206 678  
[emeap@FPEvalves.com](mailto:emeap@FPEvalves.com)

AMERICAS  
+1 262 548 6220  
[americas@FPEvalves.com](mailto:americas@FPEvalves.com)

CHINA  
+86 0519 8158 0102  
[china@FPEvalves.com](mailto:china@FPEvalves.com)